



Kestrel Project Volunteer Orientation

Troy Gipps, Vice President / Kestrel Project Leader
Christine Thurber, Coordinator, Kestrel Monitoring Program
kestrel@graftonland.org, 508-887-0065



Agenda

- Welcome/Introductions
- Project Overview
 - Why kestrels?
 - Site Selection
 - Installation
 - Monitoring
- Guest Speaker

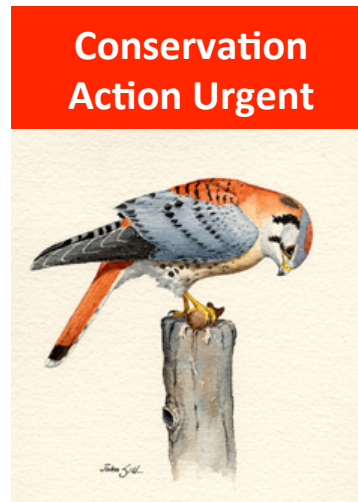


Why kestrels?



- The American kestrel is among the most precipitously declining birds in Massachusetts.
- Distribution shrunk by more than 50% in 30 years.

Conservation Status



Breeding Bird Atlas

↓ Strong Decline

Breeding Bird Survey

↓ Strong Decline

Christmas Bird Count

↓ Strong Decline



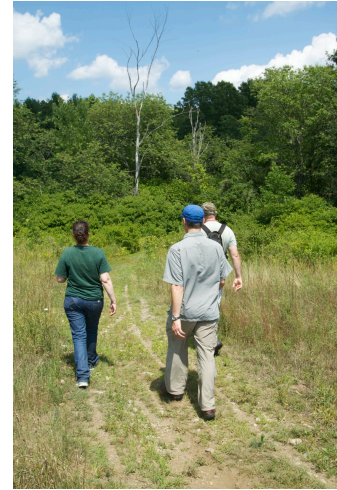
Why kestrels?

- Cavity nesting bird
- Great looking bird
- Falcons are cool!



Site Selection

- Referred to USDA NRCS Pamphlet
- Sought advice from MassWildlife
 - State Ornithologist, Andrew Vitz
 - Habitat Management Biologist, Marianne Piche
 - Conducted property walks / map reconnaissance
- Identified 10 locations with suitable habitat
 - Public and private property



Installation

- 25 volunteers installed 10 boxes on Nov. 8-9th



Nest Box Locations

Location		GPS Coordinates	Property Owner
Potter Hill Meadows	✓	42.206167, -71.718472	Grafton Land Trust
Pell Farm	✓	42.202453, -71.646916	Town of Grafton (Con Com)
Webber CR	✓	42.236514, -71.697501	Town of Grafton
Hennessey I	✓	42.223732, -71.652484	Town of Grafton (Con Com)
Hennessey I	✓	42.219401, -71.649745	Town of Grafton (Con Com)
Merriam Road Conservation Area	✓	42.217104, -71.664687	Town of Grafton (Con Com)
Tufts Veterinarian School	✓	42.250198, -71.672323	Tufts University Vet School
North Brigham Hill Road	✗		Crater/Ferraro
North Brigham Hill Road	✗		White
Old Upton Road	✗		Holberger

✓ = Monitors needed

✗ = Monitors not needed (private property)





Christine Thurber, Coordinator, Kestrel Monitoring Program

Avian Experience



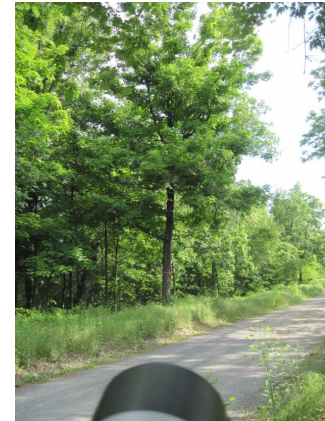
Patuxent Research Refuge:

Fed, socialized,
and medicated
sea ducks

**Frostburg State
University :**
Managed the
avian library



Master's thesis: *Territoriality and Aggression in Cerulean Warblers*



Captured, banded and monitored breeding
behavior (nesting!) of Cerulean Warblers



Rocky Gap State Park aviary:

Fed,
medicated,
socialized, and
trained injured
raptors



Northern Saw- whet Owl fall migration study:

Captured,
banded, and
collected
morphological
data

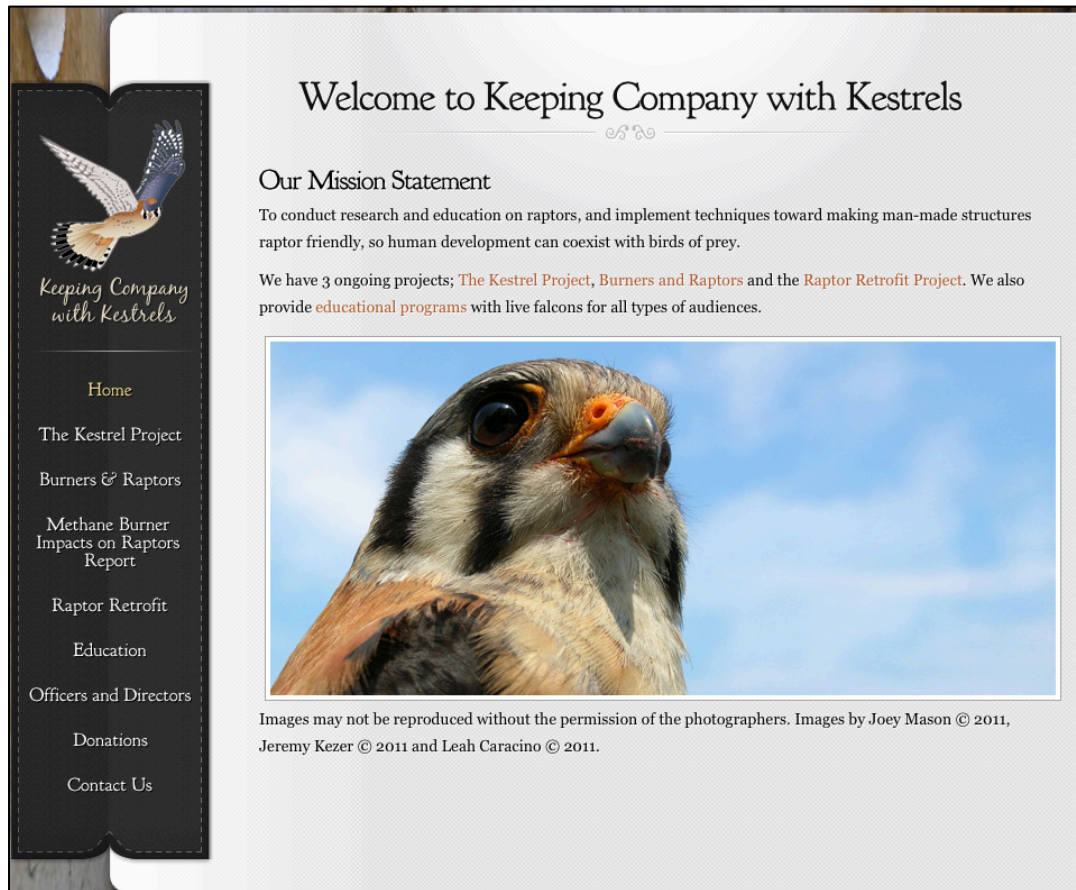


Monitoring

- Phases:
 - Pre-season check
 - Early breeding season
 - From late March onward
 - Focus on breeders
 - Mid-season
 - Post-season
 - After birds depart



Guest Speaker




Welcome to Keeping Company with Kestrels

Our Mission Statement

To conduct research and education on raptors, and implement techniques toward making man-made structures raptor friendly, so human development can coexist with birds of prey.

We have 3 ongoing projects; [The Kestrel Project](#), [Burners and Raptors](#) and the [Raptor Retrofit Project](#). We also provide [educational programs](#) with live falcons for all types of audiences.



Images may not be reproduced without the permission of the photographers. Images by Joey Mason © 2011, Jeremy Kezer © 2011 and Leah Caracino © 2011.

Home

The Kestrel Project

Burners & Raptors

Methane Burner Impacts on Raptors Report

Raptor Retrofit

Education

Officers and Directors

Donations

Contact Us

Joanne “Joey” Mason
President, *Keeping Company with Kestrels*

Managing an American kestrel nest box and banding project around cranberry bogs in southeastern Massachusetts since 1989.

Licensed master bander since 2000.

www.keepingcompanywithkestrels.org

